

# AP<sup>®</sup> Instructional Planning Report (2016)

✓ Data Updated Jul 11, 2016, Report Run Jul 11, 2016

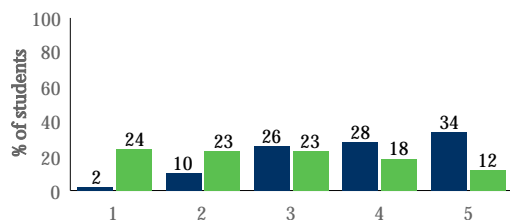
This subject-specific report compares your students' performance on specific topics in this AP Exam with the performance of all students on these same topics, helping teachers target areas for increased attention and focus in the curriculum. Other uses of the report, such as teacher evaluation or institutional ranking, are not warranted. Students who tested on late-testing dates are not included in this report.

## Canyon Crest Academy (050893) - United States History

**Your Group** Total Students: 214

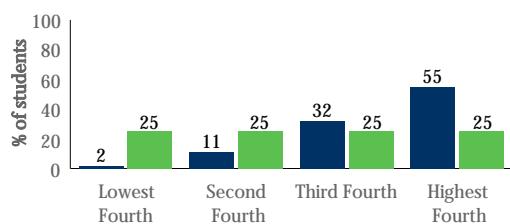
**Global** Total Students: 383,723

### Overall Score Distributions



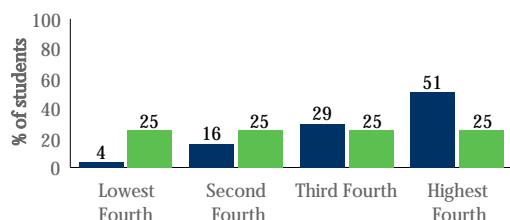
Overall Score Distributions	1	2	3	4	5
Number of Students in Your Group	5	22	55	59	73
% Students in Your Group	2.3	10.3	25.7	27.6	34.1
% Students Globally	24.4	23.4	22.5	17.9	11.9

### Multiple-Choice Section



Multiple-Choice Section	Lowest Fourth	Second Fourth	Third Fourth	Highest Fourth
Number of Students in Your Group	4	24	69	117
% Students in Your Group	1.9	11.2	32.2	54.7
% Students Globally	25.0	25.0	25.0	25.0

### Free-Response Section



Free-Response Section	Lowest Fourth	Second Fourth	Third Fourth	Highest Fourth
Number of Students in Your Group	8	34	62	110
% Students in Your Group	3.7	15.9	29.0	51.4
% Students Globally	25.0	25.0	25.0	25.0



# AP<sup>®</sup> Instructional Planning Report (2016)

✓ Data Updated Jul 11, 2016, Report Run Jul 11, 2016

## Canyon Crest Academy (050893) - United States History

### Performance on Multiple-Choice Section (Maximum Possible Score = 52)

Content Area	Number of Questions	Global Mean	Group Mean	Number of Students in Your Group			
				Lowest Fourth	Second Fourth	Third Fourth	Highest Fourth
1491 - 1800	12	8	9	9	32	60	113
1800 - 1898	18	12	14	8	21	50	135
1890 - PRESENT	19	12	15	6	21	52	135
POLITICS/POWER	14	9	11	8	20	49	137
MIGRATION/SETTLEMENT & WORK, EXCHANGE, TECHNOLOGY	14	9	11	4	21	49	140
AMERICAN/NATIONAL IDENTITY & CULTURE/SOCIETY	12	8	9	9	39	27	139
AMERICA IN THE WORLD & GEOGRAPHY/ENVIRONMENT	9	6	7	12	11	84	107
ARGUMENTATION & ANALYZING SOURCES/EVIDENCE	5	3	4	4	24	55	131
CHRONOLOGICAL REASONING	23	15	18	9	21	58	126
MAKING HISTORICAL CONNECTIONS	21	14	17	5	19	69	121
TEXT-BASED STIMULUS: PRIMARY AND/OR SECONDARY	32	20	25	8	20	42	144
NON-TEXT-BASED STIMULUS: ARTWORK, CHARTS, ETC.	17	11	14	6	15	68	125
<b>Multiple-Choice Summary</b>		<b>33</b>	<b>41</b>	<b>4</b>	<b>24</b>	<b>69</b>	<b>117</b>

### Performance on Free-Response Section (Maximum Possible Score = 78)

Question/Problem	Max Possible Score	Global Mean	Group Mean	Number of Students in Your Group			
				Lowest Fourth	Second Fourth	Third Fourth	Highest Fourth
SHORT RESPONSE QUESTION: COMPARISON	3	1.6	2.2	10	30	0	174
SHORT RESPONSE QUESTION: INTERPRETATION	3	1.5	2.1	11	39	0	164
SHORT RESPONSE QUESTION: CAUSATION	3	1.7	2.2	8	33	75	98
DBQ: THESIS AND ARGUMENT DEVELOPMENT	2	1.1	1.3	0	25	91	98
DBQ: DOCUMENT ANALYSIS	2	0.6	0.7	##	##	##	##
DBQ: USING EVIDENCE BEYOND THE DOCUMENTS	2	0.4	0.7	##	##	##	##
DBQ: SYNTHESIS	1	0.2	0.3	##	##	##	##
ESSAY 2: THESIS	1	0.5	0.6	##	##	##	##
ESSAY 2: ARGUMENT DEVELOPMENT/TARGETED SKILL	2	0.6	1.0	0	12	0	37
ESSAY 2: ARGUMENT DEVELOPMENT/EVIDENCE	2	0.8	1.2	##	##	##	##
ESSAY 2: SYNTHESIS	1	0.1	0.4	##	##	##	##
ESSAY 3: THESIS	1	0.7	0.8	##	##	##	##
ESSAY 3: ARGUMENT DEVELOPMENT/TARGETED SKILL	2	0.6	0.8	##	##	##	##
ESSAY 3: ARGUMENT DEVELOPMENT/EVIDENCE	2	0.6	1.0	0	48	0	117
ESSAY 3: SYNTHESIS	1	0.2	0.4	##	##	##	##
<b>Free-Response Summary</b>		<b>31.1</b>	<b>43.0</b>	<b>8</b>	<b>34</b>	<b>62</b>	<b>110</b>

## Indicates that the distribution is not displayed because more than half of the total AP global group earned the same score.

\*\* Indicates that the distribution is not displayed because there were fewer than five questions in the category.



# AP<sup>®</sup> Instructional Planning Report (2016)

✓ Data Updated Jul 11, 2016, Report Run Jul 11, 2016

## Tips for interpreting this report

### Page 1 - Score and quartile distributions

To compare your students' performance with the global population, we evenly divide the total number of students who took this exam globally into fourths, or quartiles, based on their performance on the multiple-choice and free-response sections of the exam. We then calculate the percentage of your students that fall within each fourth or quartile based on their performance on each section.

- These fourths do NOT correspond with the final AP score of 1, 2, 3, 4 or 5.
- On the three bar graphs on the left side of the page, your students are represented by the blue bars, and the global population is represented by the green bars. For example, the right-most blue bar shows the percentage of your students who fall into the highest fourth or top quartile.
- If your students' score distribution is comparable to the global population, then your students will group evenly (approximately) across the quartiles.
- Grouping of your students in the higher quartiles indicates higher performance than the global population; grouping of your students in the lower quartiles indicates performance below the global population.
- If you are viewing a report for Seminar, the charts will compare your students with the global population on the overall score, the performance tasks, and the end-of-course exam.
- If you are viewing a report for Research, the charts will compare your students with the global population on the overall score, the academic paper, and the presentation and oral defense.

### Page 2 - Detailed quartile distributions by section

The following appear in each table:

- **Number of Questions** - maximum possible score for that content area. The mean score for the content areas will be the average number of multiple-choice questions answered correctly. Also note that individual multiple-choice questions may test more than one content area, so the summation across all content areas may be greater than the number of multiple-choice questions on the exam.
- **Global Mean** - average scores on reportable areas for all AP students globally.\*
- **Group Mean** - average scores on reportable areas for your students.\*
- **Number of Students in Your Group** - for each content area or free response question, this represents the number of your students that fell into a specific fourth or quartile. The quartiles are derived from dividing the total student population equally into four parts based on their performance in each content area.
- **SP (Free Response table only)** - mapping of science practices (listed in the Multiple Choice table) to the question/problem on the Free Response that tests these skills. Only applicable for Biology, Chemistry, Physics 1, and Physics 2.
- **Max Possible Score (Free Response table only)** - maximum possible score for that free-response question.

\*Some AP Exams allow students to choose between two or more free response questions. Mean scores are not provided for those questions because the populations of AP students choosing each question when choice is permitted can be quite different.

If you are viewing a report for Seminar or Research the quartile distributions are across content areas and performance tasks.

